

take a
fresh approach
to ironing

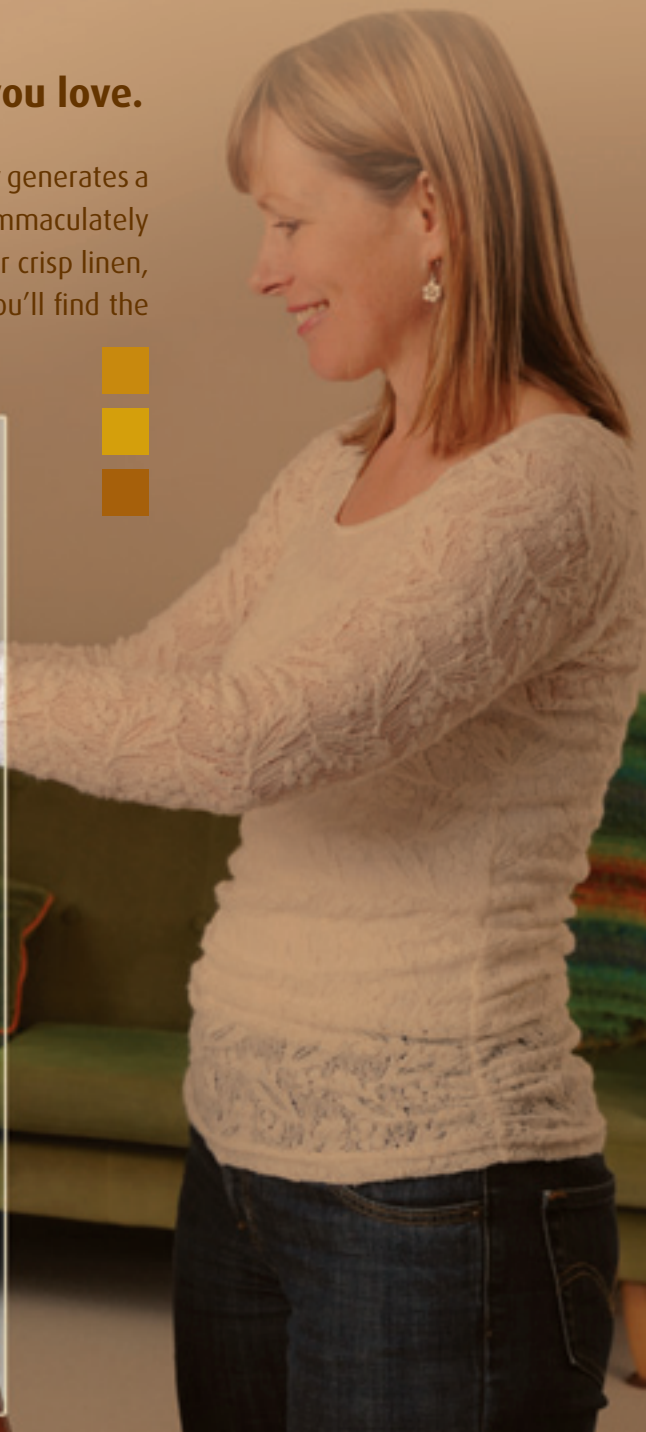
Simply switch to the

■ ■ ■ **DOMENA SP4000 Steam Press**

and discover effortless ironing
with a totally professional finish.

**Spend less time ironing...
more time doing the things you love.**

Whether you're part of a large family that regularly generates a pile of ironing, a professional couple who require immaculately pressed items, a motelier with a constant need for crisp linen, or a keen sewer who enjoys the perfect finish, you'll find the DOMENA Steam Press is worth its weight in gold.



7 COMPELLING REASONS WHY YOU SHOULD SWITCH TO A DOMENA SP4000 Steam Press

Dramatically reduce your ironing time – with its large pressing area (equal to 6/7 normal irons) and the fact that you can iron both sides of an item at once, you'll have your ironing basket empty in no time, giving you more leisure hours and saving on electricity.

Achieve professional ironing results in your own home – the continuous steam output over the entire pressing area ensures a perfect crease free finish every time. No need to pay the dry-cleaner for immaculately pressed business shirts and pants.

Enjoy real ironing comfort – with effortless fingertip control, whether left or right handed, you can choose to use the Steam Press standing up or sitting down.

Make the difficult jobs easy – because you exert 45kgs of pressure each time you lower the handle – the DOMENA Steam Press is perfect for pressing heavy fabrics, removing stubborn wrinkles or pressing several layers at once.

Iron anywhere in double quick time – all you need is a sturdy table or any flat surface and a power outlet. The DOMENA SP4000 takes only 3 minutes to heat up and its large water tank can be filled at any time during use - with ordinary tap water - giving you uninterrupted ironing.

Maintain your clothes original shape – unlike conventional irons, with a steam press there is no stretching of material, so your clothes will look better for longer.

Add that finishing touch to your latest sewing project - perfect for pressing seams and hems, applying interfacing, ensuring your fabric is crease free before cutting, and giving your completed project that final rewarding press.

EXPERIENCE THE DOMENA DIFFERENCE

2200 watt, pressure assisted steam ironing press	Anodised heating plate for added durability
Ironing surface 670mm wide x 250mm deep	Automatic safety cut out feature when closed
Fingertip control	Locking handle for convenient upright storage and transport
5 fabric settings include Synthetics, Silk, Wool, Cotton and Linen	Height 270mm with handle in stored position and 580mm when fully open
0.75 litre water tank with level indicator – can be filled using ordinary tap water	Weight 12kg
Dry press option	Steam output 90g/min
Tilted table for easy manoeuvring of garments	45kg of pressure when closed
Wide angle opening for larger items such as curtains	Energy efficient steam disc system – water in tank is only ever heated once
Adjustable temperature control guide and pilot light	Instruction booklet and DVD
Effective anti-scale system – water tank has anti-scale cartridge to remove harmful scale	2 year Mechanical and Electrical Warranty



The DOMENA SP4000 Steam Press is available now from

your dedicated
BERNINA  **SEWING CENTRE**
 passionate about sewing